

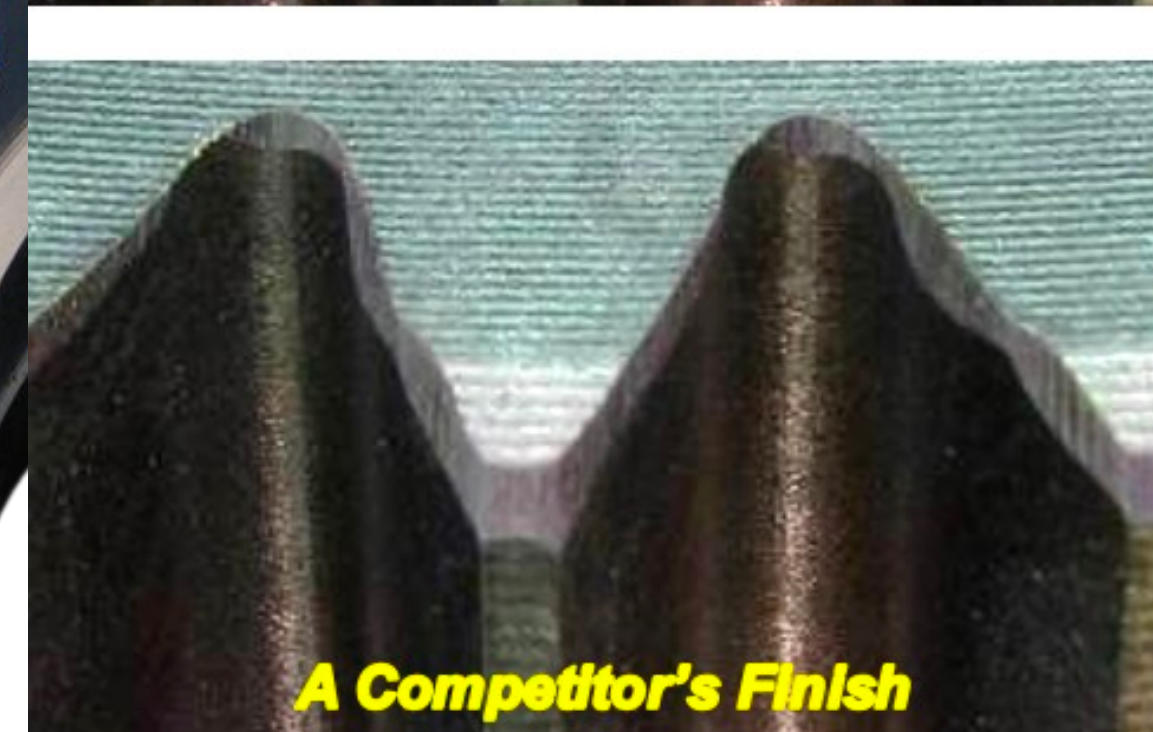
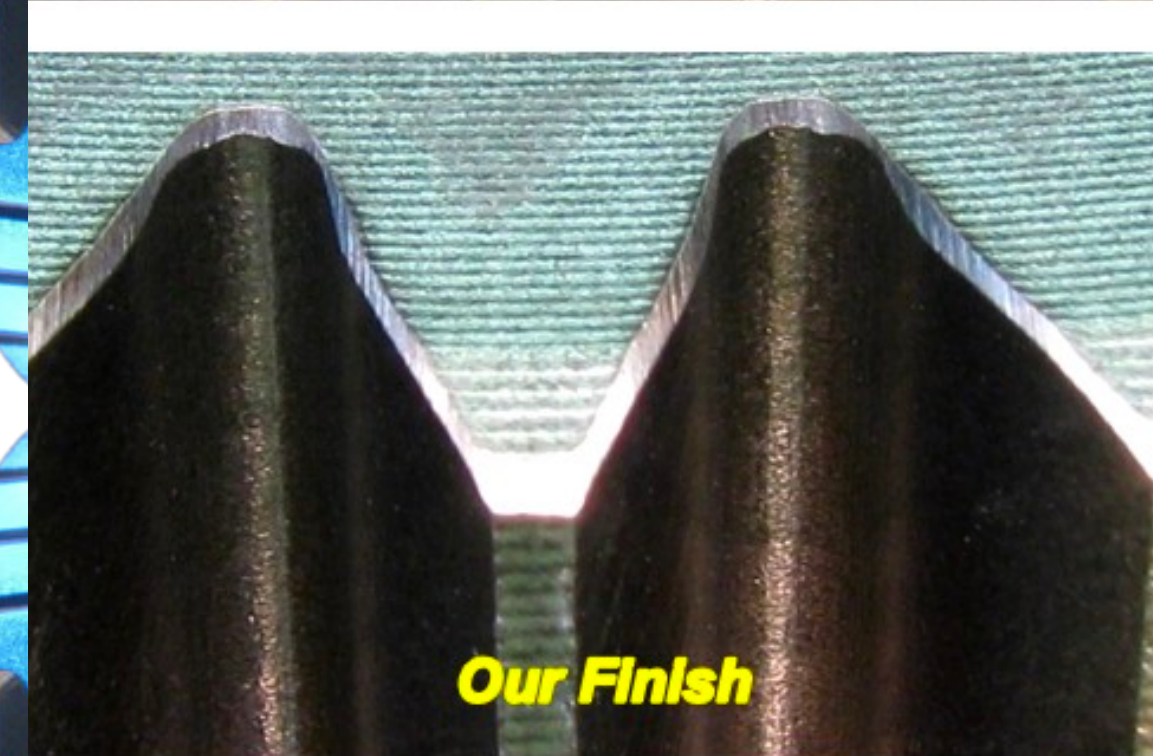
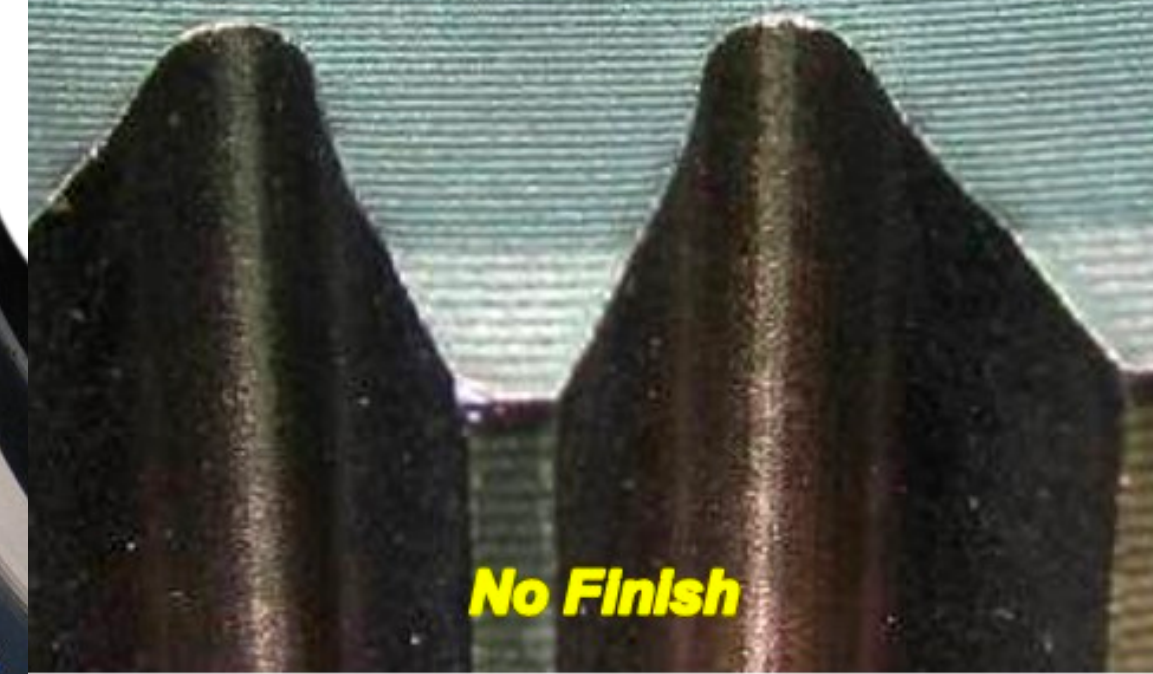
M-5W

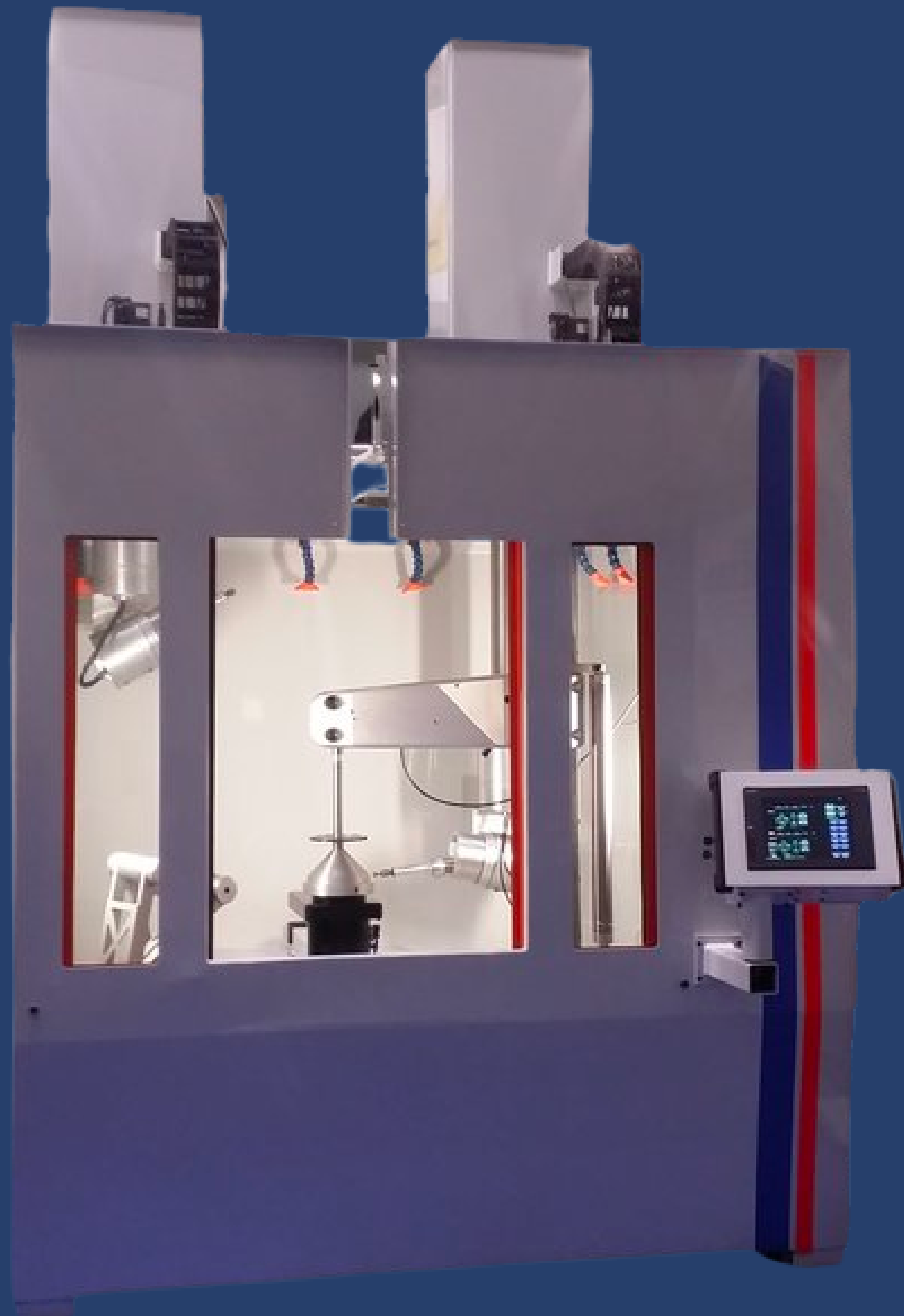
MAX SYSTEM

DEBURR AND WASH SYSTEM

SYSTEM FEATURES

- 5 TO 14-AXIS SYNCHRONIZED MOTION. UP TO 16-AXIS CAPABLE.
- TWO TOWER CAPABLE
- MULTIPLE SIMULTANEOUS OPERATIONS ARE POSSIBLE
- COMPUTER-CONTROLLED WORKING PRESSURE IS INDIVIDUALLY
- DEFINABLE FOR EACH WORK STOP
- PROPRIETARY CONVERSATIONAL PROGRAMMING
- COMPLETELY ENCLOSED DRIP-FREE DESIGN
- EXTRA LARGE OPERATOR AND MAINTENANCE ACCESS DOORS
- 7-GAUGE MIL-SPEC PLATE CONSTRUCTION
- MANUAL HINGING DOOR WITH SAFETY WINDOW
- POWDER-COATED FRAME AND ACCESSORIES
- INTEGRATED BAG-STYLE FILTRATION SYSTEM
- HIGH-INTENSITY MACHINE LIGHTING





SYSTEM SPECS

MAX NUMBER OF TOWERS - 2

WET / DRY OPTIONS AVAILABLE

WATER CAPACITY - 175 GALLONS

MAX PART WEIGHT - 150 POUNDS

AIR REQUIREMENTS - 90 PSI @ 100 CFM

POWER REQUIREMENTS (VOLTS/AMPS) 230 / 30-100

FLOOR SPACE (W X D X H) 86 INCHES X 106 INCHES X 140 INCHES

MAX WORK AREA (W X D X H) 30 INCHES X 30 INCHES X 24 INCHES